

Data Supplement: Park Condition Assessment results by park (tables) and neighborhoods (maps)

Fall 2023

In this appendix, we provide the results of the park condition assessment in two formats: 1) by park and park type via a set of tables with the direct results of the condition assessment for each amenity and the assessor's self-rating and 2) by neighborhood where we average the results of the condition scores among parks in defined 'neighborhoods' (census block groups) to identify in which parts of Hartford residents are more or less likely to encounter higher quality parks.

The tables summarize the two measures of park condition collected: 1) Park Condition Score and 2) Assessor Self-Rating. Details on the methodology can be found in the methods section. The condition assessment scores are intended to support prioritization of park renovation efforts, with the lowest scores suggesting the biggest needs for renovation and improvement. The assessor self-ratings provides additional qualitative context from the perspective of Hartford high school students on the aspects of the park that would make it somewhere they'd want to spend time with their friends.

The maps visually highlight four different ways of measuring park access and quality by neighborhood: 1) Access, 2) Acreage, 3) Amenities, and 4) Condition. The Access map highlights which parts of Hartford lack access to any park within a ten-minute walk, regardless of the quality of that site. The Acreage and Amenities maps display neighborhoods with higher levels of each on a per capita basis (e.g. acres per person) in darker shades of orange. The Condition map displays neighborhoods by the average condition of nearby parks – with darker shades of orange indicating better condition scores.

The underlying excel table for the park condition results is available and the map data can be directly accessed via this interactive web tool: <https://www.arcgis.com/apps/mapviewer/index.html?webmap=6df85398f6514cc990f1b114882b2715>

If you have any questions, please reach out to Will Klein, Associate Director of Park Research at Trust for Public Land, william.klein@tpl.org

Regional Parks

Condition Assessment

Percentage of condition issues for given park feature, higher is better. Blank indicates feature not present.
 B - broken/unusable feature; M - Maintenance issue; C - Cleanliness issue; D - Dead plants, L - Like New (bonus point)

Park Name	Park Acres	Condition Score	Other													
			Fields / Diamonds	Bball Courts	Sport Courts	Walking loops	Play grounds	Splash pads	Fitness Areas	Dog Parks	Picnic Shelters	Rest rooms	Water Ftns	Signs	Trash Cans	Plantings
Keney Park*	425.4	42%	0% (B, M, C)	33% (M, C)		67% (M)	67% (B)	33% (B, M)	67% (C)		67% (M)		33% (B, M)	67% (B)	50% (T)	33% (DD)
Goodwin Park**	235.7	60%				33% (B, M)							67% (M)	67% (B)	100%	0% (DDD)
Bushnell Park	35.5	76%	33% (M, C)			100% (N, C)					100% (N, C)	100%	0% (B, M, C)	100% (N, C)	100%	
Colt Park	94.6	89%				67% (M)	100%	100%				100%		67% (C)	100%	
Elizabeth Park	20.0	94%	67% (B)			67% (B)					100%	100%		100% (N, C)	100%	
Pope Park	75.4	95%				100%	67% (L)				100%	100%	67% (C)	133% (N)	100%	
Riverside Park	179.3	106%				100%	100%				100%	100%		133% (N)	100%	

Assessor 'Self-Rating'

On a scale of 0 - 10, with 10 being 'extremely likely', how likely would you be to recommend this park to a friend or colleague? Responses are lightly edited.

Rating	Explanation of rating
2.0	I put 2 because most of the stuff in the park are damaged and broken
2.0	It's a good-looking park. However, we did not have a great experience
8.5	
8.0	It has a lot of features
10.0	It's a beautiful park to hang out with friends and family
10.0	It's peaceful and there are many activities to do there. Also they have nice long trails
8.0	It's a really big park and a lot of activities happen there

*This assessment does not include the section of Keney Park with the cricket fields or the golf course.

**This assessment does not include the golf course at Goodwin Park.

Neighborhood Parks

Condition Assessment

Percentage of condition issues for given park feature, higher is better. Blank indicates feature not present.
 B - broken/unusable feature; M - Maintenance issue; C - Cleanliness issue; D - Dead plants, L - Like New (bonus point)

Park Name	Park Acres	Condition Score	Fields / Diamonds	Bball Courts	Other		Walking loops	Play grounds	Splash pads	Fitness Areas	Dog Parks	Picnic Shelters	Rest rooms	Water Ftns	Signs	Trash Cans	Plantings
					Sport Courts												
Sigourney Square Park	2.5	33%	67% (M)				33% (M, C)	0% (B, M, C)	33% (M)	0% (B, M, C)		33% (M, C)	33% (M, C)	33% (B, C)	50% (C)	67% (D)	
Dominick DeLucco Park	1.1	44%	100%	100%			33% (M, C)	0% (B, M, C)	0% (B, M, C)			0% (B, M, C)	0% (B, M, C)	67% (B)	100%		
Lozada Park	2.4	47%		100%				0% (B, M, C)	33% (M, C)				33% (M, C)	67% (C)			
Hudson Street Community Garden	1.4	67%						67% (B)						133% (N)	50% (C)		
Forster Heights Park	3.0	71%					67% (M)	67% (M)	33% (M, C)			67% (B)	67% (B)	67% (C)	100%		
Hyland park	18.9	71%					67% (B)	100%	33% (M, C)			100%	0% (B, M, C)	67% (C)	100%		
West Quirk Turf	3.3	73%					67% (C)	33% (M, C)					33% (M, C)	133% (N)	100%		
Joseph V. Cronin Park	12.0	78%	67% (C)					100%	67% (B)				67% (C)	67% (C)	100%		
Breakthrough Magnet (Rice Heights)	7.0	92%					100%	100%						67% (C)	100%		
Windsor Street Park & Willie Ware Rec Center	1.1	100%					100%	100%	100%				67% (C)	133% (N)	100%		
George Day Park	0.7	100%					100%	100%	100%				67% (C)	133% (N)	100%		
North Pope*	2.8	100%					100%	67% (C)	100%					133% (N)	100%		

*Also known as Baby Pope

Assessor 'Self-Rating'

On a scale of 0 - 10, with 10 being 'extremely likely', how likely would you be to recommend this park to a friend or colleague? Responses are lightly edited.

Rating	Explanation of rating
6.0	It's not bad but It's not the best. It looked poorly managed.
3.0	The park has the potential to be a 10. However right now the park is poorly maintained, very dirty, unsafe, and overall kids can get hurt or sick from going to this park
2.0	It's a park that's in a place known as "the hood". I definitely wouldn't call it the safest park in my opinion. Mostly for neighborhood kids.
7.0	Because the play area is not in good condition. The basketball court is fair & garden is in great condition.
7.0	Good park besides the grass and broken BBQ and water fountain
6.0	A great park with many activities
8.0	This park is safe and it is for everyone. Anyone could have a great time here and enjoy themselves.
8.0	It's a good park. It just needs to be maintained regularly
6.0	I gave a 6 because the play ground was small and it didn't have a bathroom, but overall it's a good place
8.0	A lot of stuff to do
6.0	Pretty small
5.0	Kinda boring and mostly a kiddie park

Mini Parks

Condition Assessment

Percentage of condition issues for given park feature, higher is better. Blank indicates feature not present.
 B - broken/unusable feature; M - Maintenance issue; C - Cleanliness issue; D - Dead plants, L - Like New (bonus point)

Park Name	Park Acres	Condition Score	Fields / Diamonds	Bball Courts	Other		Walking loops	Play grounds	Splash pads	Fitness Areas	Dog Parks	Picnic Shelters	Rest rooms	Water Ftns	Signs	Trash Cans	Plantings
					Sport Courts												
Gallaudet Square - Triangle	0.1	67%	100%	33% (M, C)											67% (C)		
Charter Oak Tree Memorial Park	0.0	67%	33% (M, C)				100%										
Barnard Park	1.6	78%					67% (M)								67% (C)	100%	
Columbus Green	0.3	78%					33% (B, M)								67% (C)	100%	
Roberta L Jones Park	0.1	89%					33% (M, C)								133% (N)	100%	
Saint Benedict Playground	0.0	94%	100%	100%			67% (C)	33% (M)							133% (N)	100%	
Porter Park	0.4	100%	100%	100%													
Franklin Square Park	0.1	100%		67% (M)			100%								133% (N)	100%	
Keney Memorial Tower	1.2	NA (No amenities)													133% (N)	100%	
Gallaudet Square	0.1	NA (No amenities)													67% (C)	100%	
Charter Oak Monument	0.1	NA (No amenities)													133% (N)		33% (DD)
Bellevue Square Park	2.8	NA (No amenities)													33% (B, C)		67% (D)

Assessor 'Self-Rating'

On a scale of 0 - 10, with 10 being 'extremely likely', how likely would you be to recommend this park to a friend or colleague? Responses are lightly edited.

Rating	Explanation of rating
3.0	Unsafe
8.0	Well maintained playscape
3.0	Doesn't look welcoming: needs work
3.0	The space is not big; there are no actual activities. The grass is overgrown, there are no trees and the paths are unrollable
9.0	A quiet park in a decent neighborhood and no major safety issues.
2.0	There's not that much you can do
2.0	
5.0	It's a pretty park but there isn't much activity. But, it's a great place to go when you need fresh air
6.0	There's nothing to do at this park so you can relax there
4.0	Because they didn't have any bathroom
1.0	Not well maintained and can use some landscaping
5.0	It's not the worst, but It's bad

Plazas

Condition Assessment

Assessor 'Self-Rating'

Percentage of condition issues for given park feature, higher is better. Blank indicates feature not present.
 B - broken/unusable feature; M - Maintenance issue; C - Cleanliness issue; D - Dead plants, L - Like New (bonus point)

On a scale of 0 - 10, with 10 being 'extremely likely', how likely would you be to recommend this park to a friend or colleague? Responses are lightly edited.

Park Name	Park Acres	Condition Score	Fields / Diamonds	Bball Courts	Other		Walking loops	Play grounds	Splash pads	Fitness Areas	Dog Parks	Picnic Shelters	Rest rooms	Water Ftns	Signs	Trash Cans	Plantings	Rating	Explanation of rating
					Sport Courts														
Mortensen Riverfront Plaza	1.8	87%	67% (M)	67% (M)			100%								100% (N, C)	100%		8.0	The park was a bit dirty from the recent flooding
Bushnell Plaza Sculpture Garden*	0.6	107%					100%					100%			133% (N)	100%		8.0	Its safe and well taken care of
Constitution Plaza	1.5	107%	100%				100%					100%			133% (N)	100%		4.0	It's okay. It gives a very 'formal' feel. However, it is a nice place to walk because it is very calm
Old State House Square	2.0	108%		67% (M)										133% (N)	133% (N)	100%		10.0	Very historical and educational
Minuteman Park	1.3	111%					100%								133% (N)	100%		6.0	Because it's a little boring and there isnt much to see or do
Nassau Plaza	1.2	113%		67% (B)			133% (N)					133% (N)			133% (N)	100%		10.0	Very clean and very nice view
Burr Mall	1.2	133%													133% (N)			4.0	Because it has nice art features
Fishman Plaza	1.1	NA (No amenities)																7.0	There was not really much to see other then two structures
City Hall Plaza	0.2	NA (No amenities)																0.0	City Hall Plaza is a business not a park

*Access is sometimes limited via a gate

Schoolyards

Condition Assessment

Percentage of condition issues for given park feature, higher is better. Blank indicates feature not present.
 B - broken/unusable feature; M - Maintenance issue; C - Cleanliness issue; D - Dead plants, L - Like New (bonus point)

Park Name	Park Acres	Condition Score	Fields / Diamonds	Bball Courts	Other		Walking loops	Play grounds	Splash pads	Fitness Areas	Dog Parks	Picnic Shelters	Rest rooms	Water Ftns	Signs	Trash Cans	Plantings
					Sport Courts												
Bulkeley High School North - Temporary	1.0	33%						0% (B, M, C)							67% (C)		
Rawson School	0.9	67%	100%				67% (C)	33% (M, C)							67% (C)		
Al Prince Technical	5.2	75%			100%		67% (C)							33% (B, C)		100%	
Hartford Public High School	17.1	75%					67% (M)	67% (C)							67% (C)	100%	
Hartford Magnet	3.3	75%						67% (M)							133% (N)	100%	
Wish Elementary	12.7	83%					67% (C)	100%							67% (C)	100%	
McDonough Schoolyard	2.4	83%						67% (B)								100%	
Annie Fisher School & Turf Field	7.6	94%					100%	100%						67% (M)	133% (N)	100%	
Environmental Sciences Magnet	0.1	100%					100%									100%	

Assessor 'Self-Rating'

On a scale of 0 - 10, with 10 being 'extremely likely', how likely would you be to recommend this park to a friend or colleague? Responses are lightly edited.

Rating	Explanation of rating
0.0	It's a school park and It's not very safe nor does it look fun.
7.0	It's a good school playground
3.0	This is school property, so I wouldn't really have my friends just go over there
5.0	It's not the best park but It's pretty clean and a lot of space to do activities
7.0	Good playground for the kids to have fun
8.0	The court is good and a lot of space
0.0	Very outdated and is not in good condition
9.0	It is good for sports and workouts
4.0	It's a great park. However, that area belongs to the school.

Other

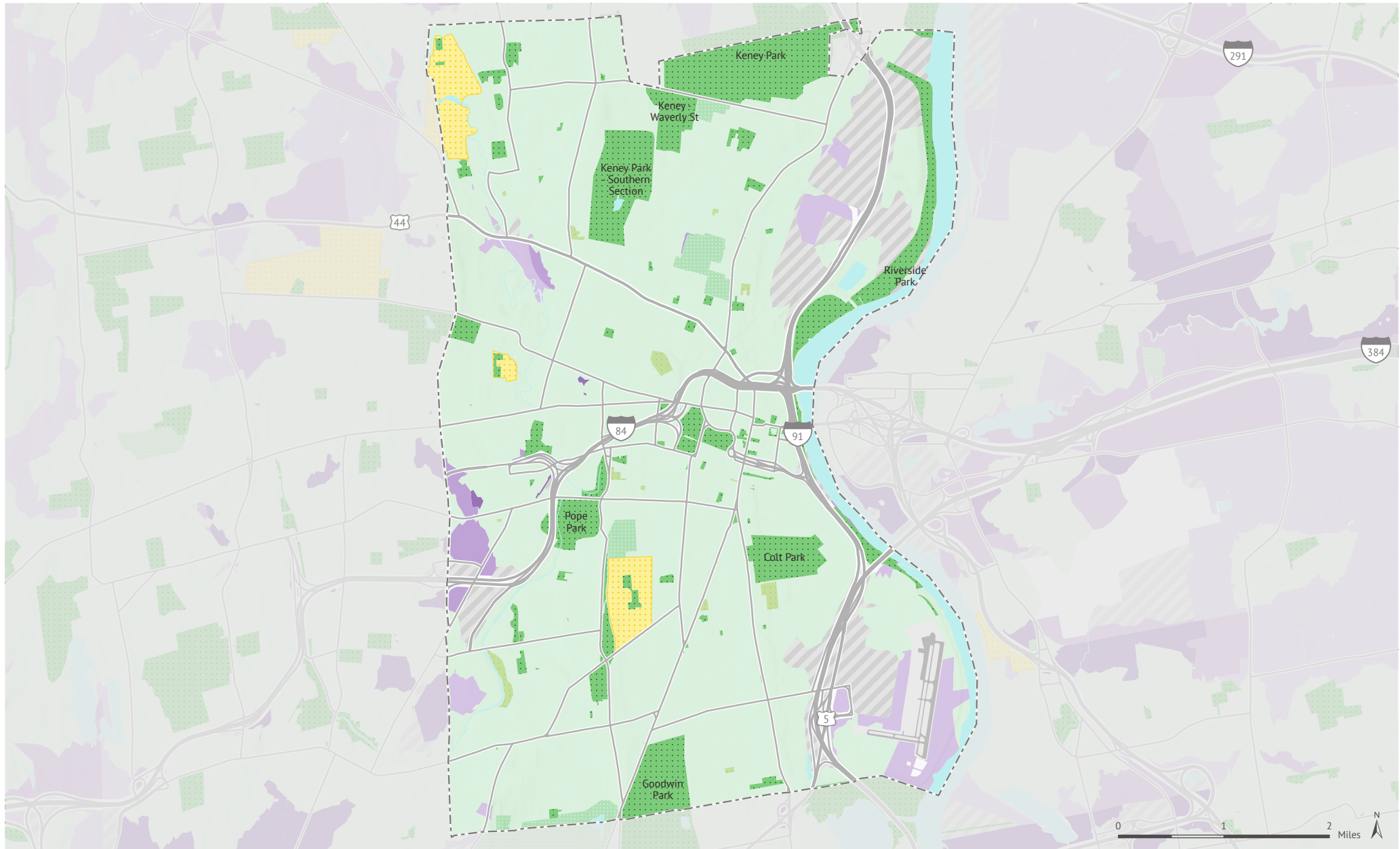
Condition Assessment

Assessor 'Self-Rating'

Percentage of condition issues for given park feature, higher is better. Blank indicates feature not present.
 B - broken/unusable feature; M - Maintenance issue; C - Cleanliness issue; D - Dead plants, L - Like New (bonus point)

On a scale of 0 - 10, with 10 being 'extremely likely', how likely would you be to recommend this park to a friend or colleague? Responses are lightly edited.

Park Name	Park Acres	Condition Score	Fields / Diamonds	Bball Courts	Other		Walking loops	Play grounds	Splash pads	Fitness Areas	Dog Parks	Picnic Shelters	Rest rooms	Water Ftns	Signs	Trash Cans	Plantings	Rating	Explanation of rating
					Sport Courts														
Old North Cemetery	17.4	87%	100%	67% (M)		33% (B, M)									133% (N)		67% (D)	2.0	It's a little creepy and a lot of bugs
Turning Point Park	2.7	117%		100%											133% (N)			0.0	Wasn't really entertaining at all
University of Hartford	9.9	111%	100%														100%	0.0	Nothing is there



Park Access

HARTFORD, CONNECTICUT

This analysis is provided via the ParkServe® mapping application, which identifies the population living within a 10-minute walk of a park by creating dynamic 1/2-mile service areas (10-minute walking distance) for all public parks. In this analysis, service areas use the street network to determine walkable distance (streets such as highways, freeways, and interstates are considered barriers).


In Hartford, % of the population lives within a 10-minute walk of a park. Among the remaining people without access to a nearby park, Trust for Public Land suggests **where to prioritize the development of new parks** to reduce this gap. This prioritization is based on a comprehensive index of six equally-weighted demographic and environmental metrics:

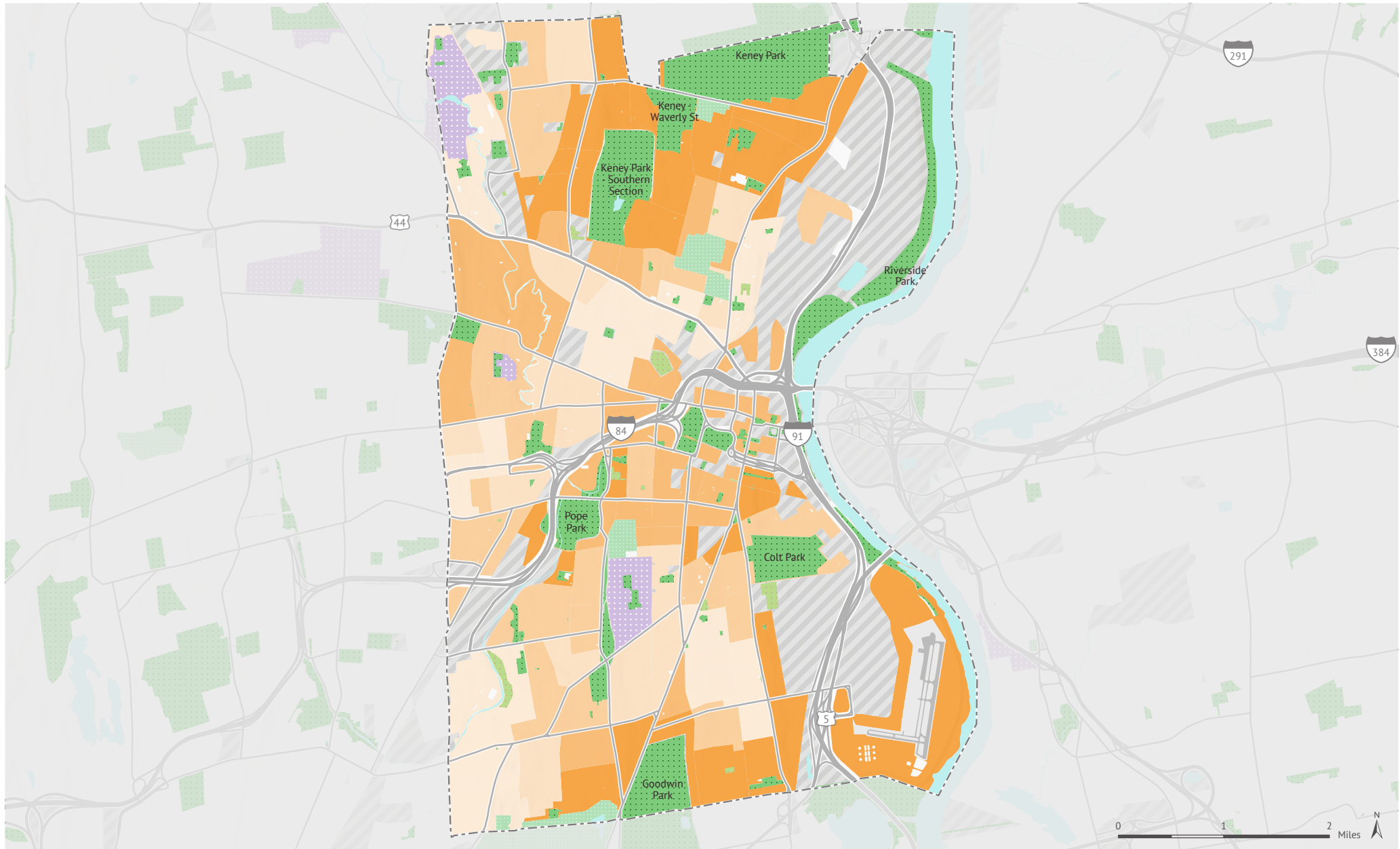
- Population density*
- Density of low income households (households with income less than 75% of the urban area median income; less than \$ in Hartford*)
- Density of people of color*
- Community health (a combined index based on the rate of poor mental health and low physical activity from the 2022 CDC PLACES census tract dataset)
- Urban heat islands (surface temperature at least 1.25 degrees greater than city mean surface temperature from Trust for Public Land, based on Landsat 8 satellite imagery)
- Pollution burden (air toxics respiratory hazard index from 2022 EPA EJScreen)

*Based on 2022 Forecast block groups provided by ESRI

Park with public access	City boundary
Other park	Priority areas for new parks (outside of 10-minute walk service areas of parks with public access)
10-minute walk (half-mile) service area of park with public access	Very high priority
Cemetery	High priority
University	Moderate priority
Vacant zero population area	

Special thanks to the following data providers: City of Hartford, CDC, EPA. Information on this map is provided for purposes of discussion and visualization only. Map created by Trust for Public Land on June 3, 2024. Trust for Public Land and Trust for Public Land logo are federally registered marks of Trust for Public Land. Copyright © 2023 Trust for Public Land. www.tpl.org





Park Acres Per Capita

HARTFORD, CONNECTICUT


In Hartford, residents in neighborhoods of color have access to park space per person than those in white neighborhoods. Residents in low-income neighborhoods have access to those in high-income neighborhoods.

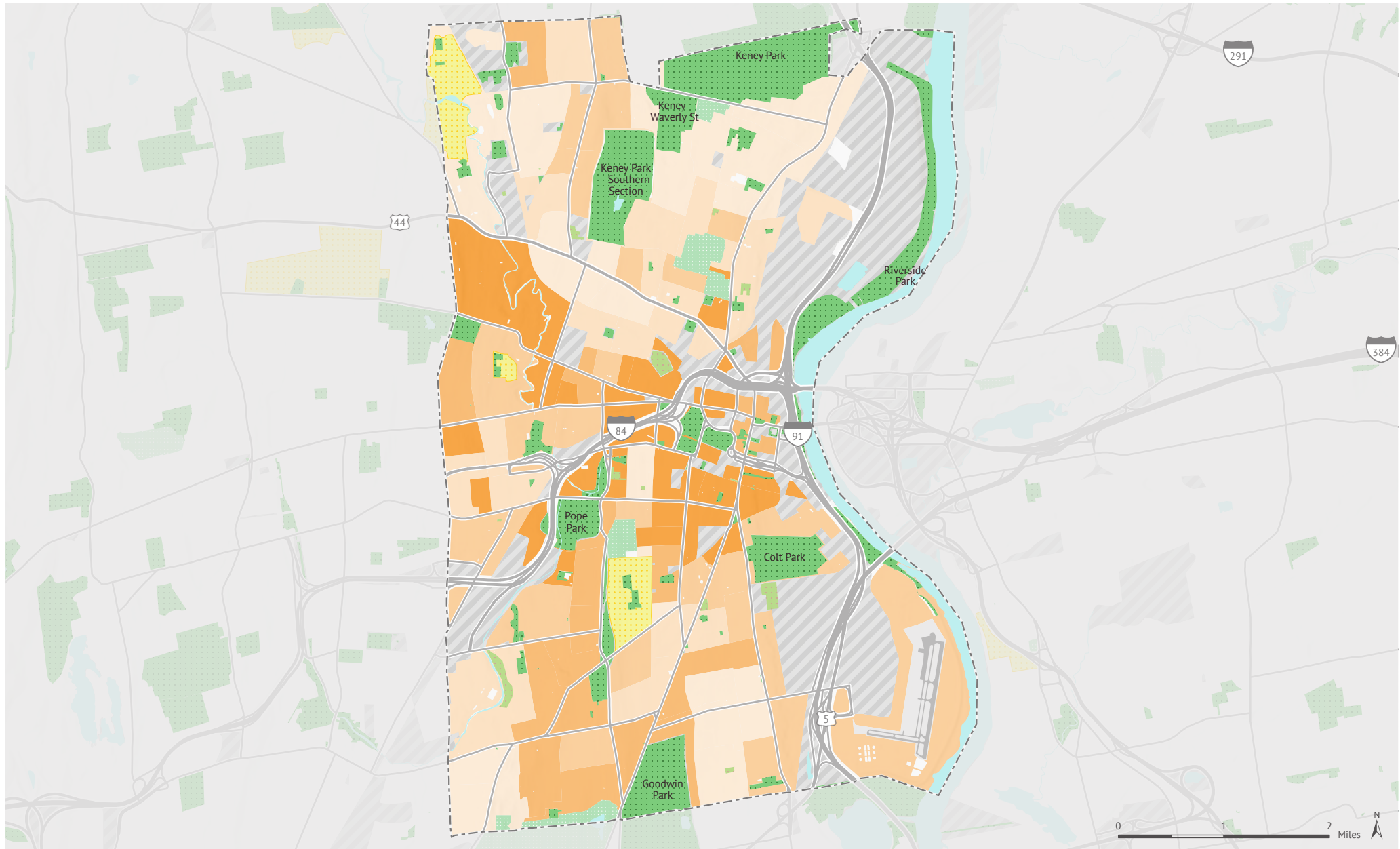
Park space per person effectively measures the available park space within a 10-minute walk of a micro-neighborhood, identified as those with the highest concentrations (top 20% of all census block groups in a city) of people of color or white population and high-income or low-income households. Households with income less than 75% of city median income (less than \$ in) are considered low-income; households with income greater than 125% of city median income (greater than \$ in) are high-income.

The metrics for people of color reflect each of the Census-designated race/ethnicity groups: Black, Hispanic, and Indigenous and Native American, Asian Americans, Pacific Islanders, multiple races, and other communities of color. Demographic profiles are based on 2020 Forecast block groups provided by Esri.

- Park with public access
 - Other park
 - Cemetery
 - University
 - Vacant zero population area
 - City boundary
- Park acres per capita
 - Very high
 - High
 - Moderate
 - Low
 - Very low

Special thanks to the following data providers: City of Hartford, CDC, EPA. Information on this map is provided for purposes of discussion and visualization only. Map created by Trust for Public Land on June 3, 2024. Trust for Public Land and Trust for Public Land logo are federally registered marks of Trust for Public Land. Copyright © 2023 Trust for Public Land. www.tpl.org





Park Amenities Per Capita

HARTFORD, CONNECTICUT


In Hartford, residents in neighborhoods of color have access to park space per person than those in white neighborhoods. Residents in low-income neighborhoods have access to those in high-income neighborhoods.

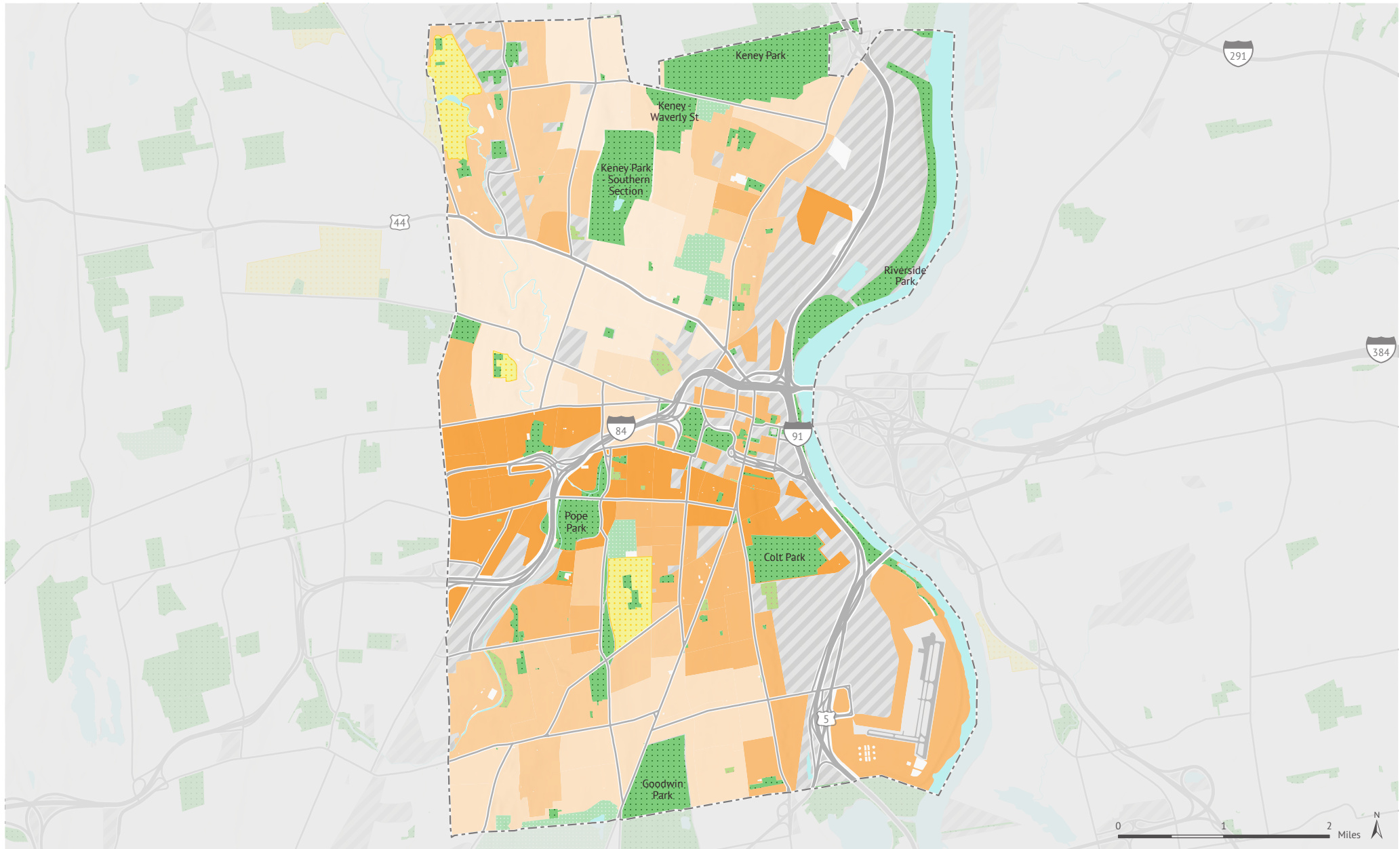
Park space per person effectively measures the available park space within a 10-minute walk of a micro-neighborhood, identified as those with the highest concentrations (top 20% of all census block groups in a city) of people of color or white population and high-income or low-income households. Households with income less than 75% of city median income (less than \$ in) are considered low-income; households with income greater than 125% of city median income (greater than \$ in) are high-income.

The metrics for people of color reflect each of the Census-designated race/ethnicity groups: Black, Hispanic, and Indigenous and Native American, Asian Americans, Pacific Islanders, multiple races, and other communities of color. Demographic profiles are based on 2020 Forecast block groups provided by Esri.

- Park with public access
 - Other park
 - Cemetery
 - University
 - Vacant zero population area
 - City boundary
- Very High
 - High
 - Moderate
 - Low
 - Very Low

Special thanks to the following data providers: City of Hartford, CDC, EPA. Information on this map is provided for purposes of discussion and visualization only. Map created by Trust for Public Land on June 3, 2024. Trust for Public Land and Trust for Public Land logo are federally registered marks of Trust for Public Land. Copyright © 2023 Trust for Public Land. www.tpl.org





Park Condition Score

HARTFORD, CONNECTICUT


In Hartford, residents in neighborhoods of color have access to park space per person than those in white neighborhoods. Residents in low-income neighborhoods have access to those in high-income neighborhoods.

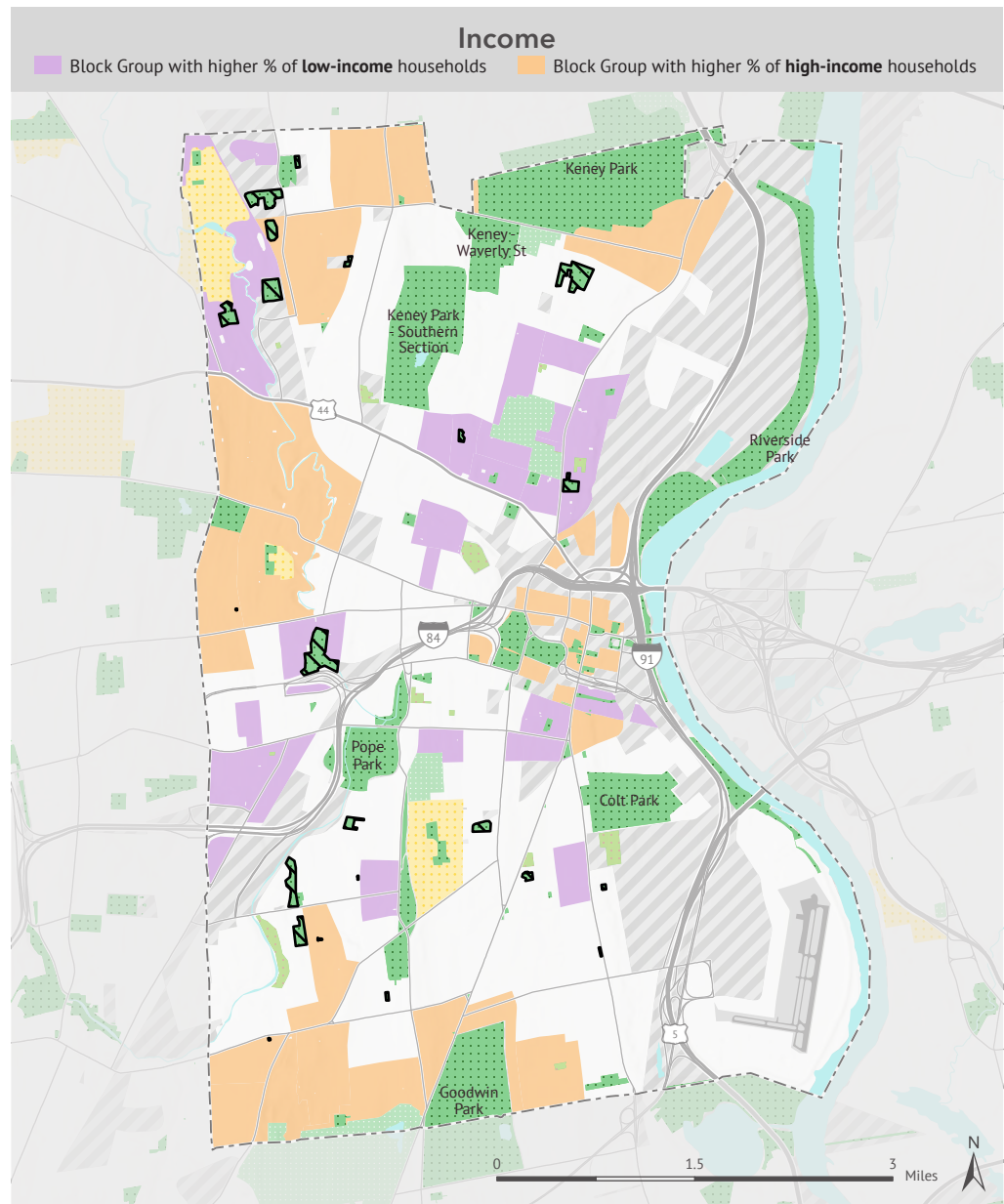
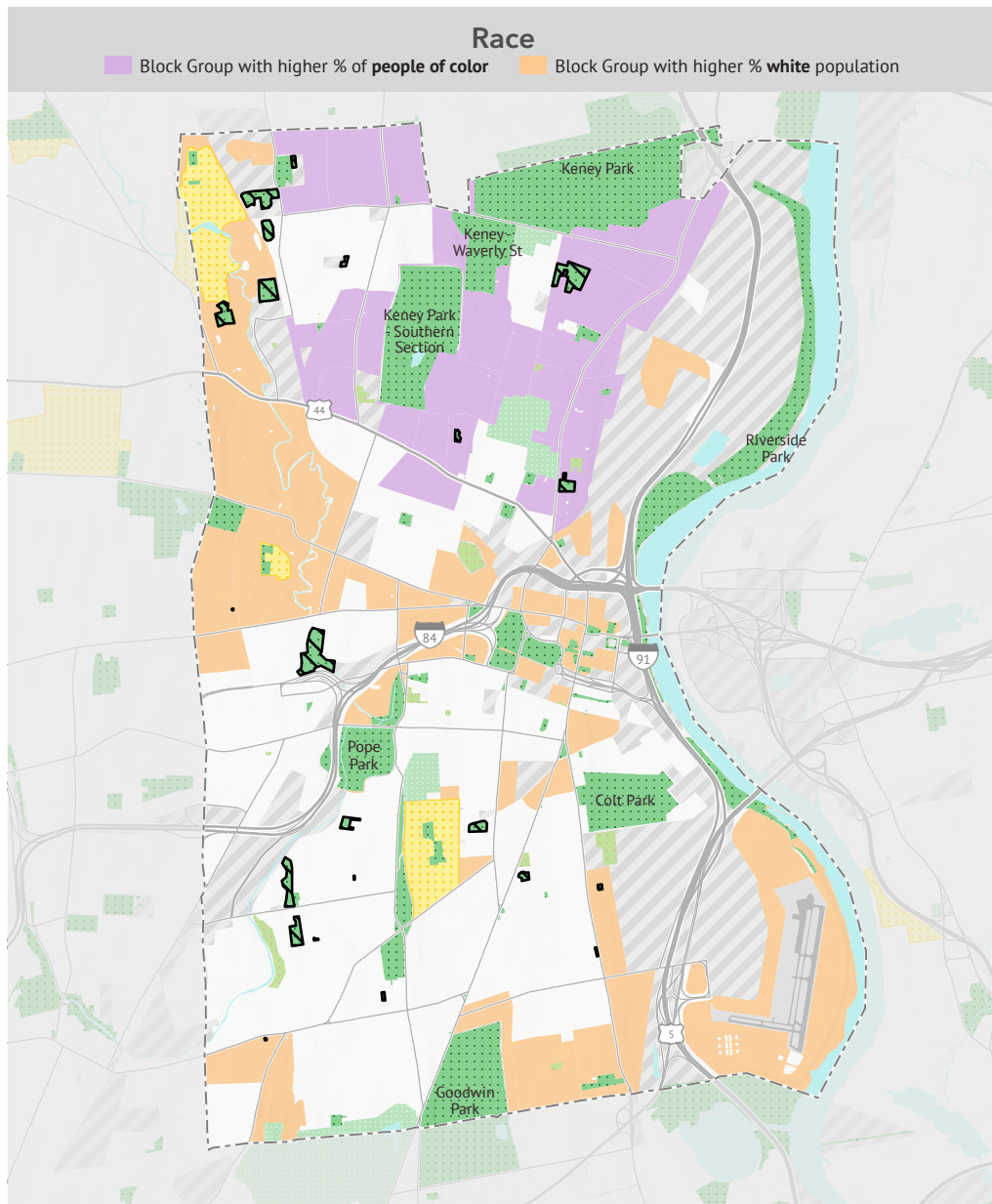
Park space per person effectively measures the available park space within a 10-minute walk of a micro-neighborhood, identified as those with the highest concentrations (top 20% of all census block groups in a city) of people of color or white population and high-income or low-income households. Households with income less than 75% of city median income (less than \$ in) are considered low-income; households with income greater than 125% of city median income (greater than \$ in) are high-income.

The metrics for people of color reflect each of the Census-designated race/ethnicity groups: Black, Hispanic, and Indigenous and Native American, Asian Americans, Pacific Islanders, multiple races, and other communities of color. Demographic profiles are based on 2020 Forecast block groups provided by Esri.

- Park with public access
 - Other park
 - Cemetery
 - University
 - Vacant zero population area
 - City boundary
- Park condition score
 - Very High
 - High
 - Moderate
 - Low
 - Very Low

Special thanks to the following data providers: City of Hartford, CDC, EPA. Information on this map is provided for purposes of discussion and visualization only. Map created by Trust for Public Land on June 3, 2024. Trust for Public Land and Trust for Public Land logo are federally registered marks of Trust for Public Land. Copyright © 2023 Trust for Public Land. www.tpl.org





Demographics

HARTFORD, CONNECTICUT

In Hartford, residents in neighborhoods of color have access to park space per person than those in white neighborhoods. Residents in low-income neighborhoods have access to those in high-income neighborhoods.

Park space per person effectively measures the available park space within a 10-minute walk of a micro-neighborhood, identified as those with the highest concentrations (top 20% of all census block groups in a city) of people of color or white population and high-income or low-income households. Households with income less than 75% of city median income (less than \$ in) are considered low-income; households with income greater than 125% of city median income (greater than \$ in) are high-income.

The metrics for people of color reflect each of the Census-designated race/ethnicity groups: Black, Hispanic, and Indigenous and Native American, Asian Americans, Pacific Islanders, multiple races, and other communities of color. Demographic profiles are based on 2020 Forecast block groups provided by Esri.

- ▣ Schoolyard with public access
- ▣ University
- ▣ Park with public access
- ▣ Vacant zero population area
- ▣ Other park
- City boundary
- ▣ Cemetery